



| **SYNLAWN®**

artificial grass never looked more natural.



SYNLAWN®

artificial grass never looked more natural.

1300 SYNLAWN (796 529)

www.synlawn.com.au



SYNLawn Installation Instructions

A great water and money saving investment for home-owners with yards of all sizes and applications. Easy to install and maintain, SYNLawn artificial grass can help home owners maximise their home investment, enhance quality of life and transform unused areas into functional living spaces. Following these instructions can help create beautiful, eco-friendly landscapes that look great and save money for years to come.

NOTE: Ensure that your SYNLawn is not exposed to reflected sunlight from windows, metallic or other reflective items as this may cause fibre shrinkage and/or melting of fibres.

Before installing SYNLawn you will need the proper tools for the job. Please see the list of tools below.

Common Tools Needed

- Utility Knife
- Hammer
- Yard Rake
- Shovel
- Wheelbarrow
- Tape Measure
- Marking Paint
- Garden Hose
- Wide Shop Broom

Specialty Tools Needed

- Seaming Cloth (1 roll = 150LM)
- Seaming Glue (4L = 5M² or 20L = 25M²)
- Butyl Adhesive Tape (5LM or 15LM)
- Landscape Stakes (20 or 100 per package)
- Turf Rake (for bristle fibres)
- Hand Tamper (for outdoors applications)
- Sprinkler Caps (if needed)

Following these steps to install your SYNLawn artificial grass will give you a beautiful, green and worry-free lawn for years to come.



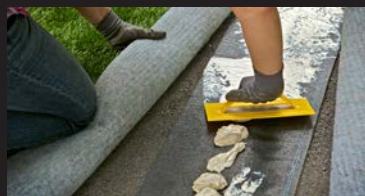
Prepare the base

Layout the proposed area. Excavate the area to a depth of 80mm or required suitable depth to existing sub base. Lay 80mm of crushed rock/roadbase and compact with vibrating plate. The level of crushed rock/roadbase when compacted should be 15-20mm below "finished height" of surrounding edging/paving.



Trim to size

Lay your artificial grass, making sure you start from one edge and roll out. Cut the over-hanging quantities with a sharp Stanley Knife. Remove the "salvage", black strip from both sides of the grass. This cannot be used to join the grass.



Glue together seams

When joining rolls of grass together, be sure to use the SYNLawn Joining Tape along the seams. Using a 4mm notched trowel, apply SYNLawn Outdoor Adhesive evenly along the Joining Tape as you go. Remember to pressure roll the seams once the grass has been joined to promote good adhesion. You can also use the Butyl adhesive tape. Ideal for small jobs also doesn't require glue.



Secure in place

Once you have covered the complete area, simply nail all of the perimeters down at 500mm intervals using 150mm flat head nails or Turf Pegs as indicated.



Groom your grass

Top dress the grass with an even distribution of dried silica sand fill to a depth of 15-20mm. A yard broom can be used at this stage to sweep in the sand evenly and to also brush the grass blades straight and vertical.

ATTENTION:

- Do not attempt to lift the grass by yourself. It is advised the rolls be cut into manageable lengths before shifting.
- Always run grass in one direction.
- Ask for our product specification sheet for help to work out required amount of infill.

The installation information has been supplied as a reference guide. No representations or warranties are made regarding the installation information.

CAUTION: For installations over 25sqm we strongly recommend using a SYNLawn Certified Installation Professional. Large installations can be very labour intensive and are not recommended for everyone. **Contact SYNLawn** and let us do the heavy lifting for you.

Australian Yarns

All SYNLawn products are produced by Advanced Polymer Technology. APT Asia Pacific is one of the worlds foremost synthetic yarn manufacturers. Our yarns are made in Australia and ideally suited for Australian conditions.

APT yarns have inbuilt proprietary features not found in other yarns. They are purpose suited, manufactured with ISO quality assurance, proven by continuous testing going back 25 years and backed by a generous warranty.



Pet Friendly

Offering a wide variety of pet friendly artificial grass products, SYNLawn gives you the freedom to choose the right look to fit your budget and landscape.

No more brown spots, mud or holes, you can enjoy green grass all year. Water (or any other liquid) drains through with no standing water, you and your pets will be able to go out and play right after the rain. SYNLawn pet installations can include odor-reducing infill to control unpleasant odours.



Exclusive HeatBlock™ Technology... Artificial grass with cooler surface temperatures

For a difference you can feel...

Beat the heat with SYNLawn artificial grass using HeatBlock™ Technology.

Scientifically proven, SYNLawn's exclusive HeatBlock™ Technology lowers rising temperatures by reflecting sunlight, thus reducing heat build-up and emissivity.

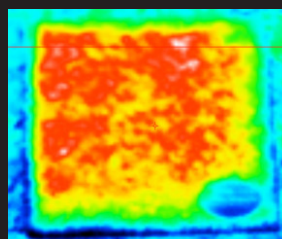
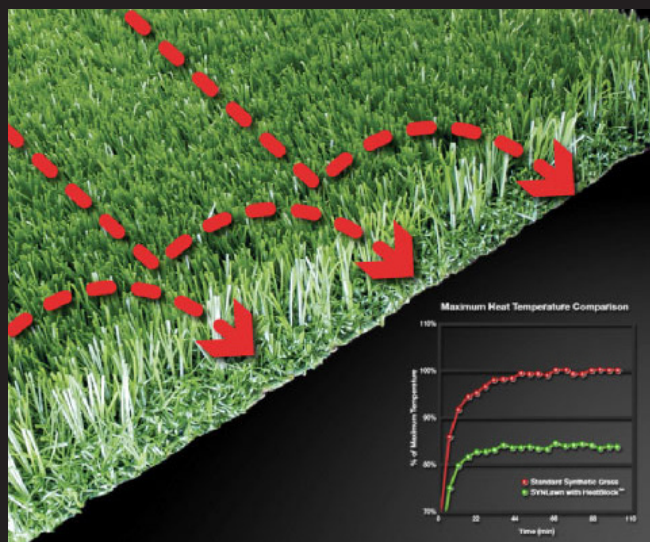
Heat build-up occurs in most materials when thermal energy from the sun's rays hit the surface of an object. In the same way dark clothing absorbs more heat than light clothing, artificial grass can also hold in heat making it uncomfortable when it is hot outside.

Therefore, SYNLawn with HeatBlock™ Technology incorporates infrared reflective pigments that help dissipate heat build-up and becomes up to 20% cooler than similar artificial grass products.

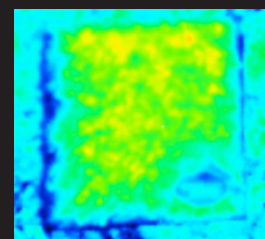
For a difference you can see...

SYNLawn artificial grass with HeatBlock™ Technology also adds a finish to each grass fibre that has less 'shine', is softer to touch and less abrasive than other artificial grasses for a more realistic look you can see and feel.

Visit a SYNLawn dealer near you to experience the SYNLawn HeatBlock™ Technology difference today.



Other synthetic grass



SYNLawn with HeatBlock™

* Thermal images captured with Fluke Ti20 Thermal Imager. Images are captured with calibrated temperature data in a matrix of over 12,000 discrete measurements per thermal image.



KEY BENEFITS:

- Combines multi-coloured 40mm grass blades with polypropylene thatch zone of natural colours
- Grass, Olive, Green and Fawn
- **HeatBlock™** cooling technology
- Creates a soft touch high weight landscaping solution
- Ideal for Residential, Playscape, Pets and Commercial
- 3.71m wide roll | 8-year warranty
- *Made in Australia from at least 75% Australian ingredients*

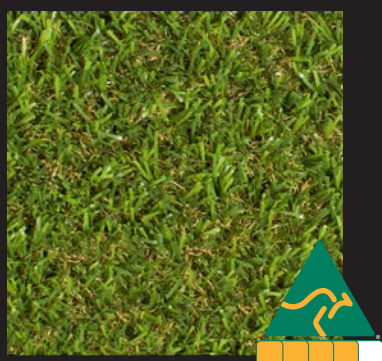
CLASSIC 40

1400 SYN-LAWN
12.7 | 19 | 1610 | 18



FOOT TRAFFIC ★★★★★

SOFTNESS ★★★★★



KEY BENEFITS:

- Combines multi-coloured 35mm grass blades with polypropylene thatch zone of natural colours
- Grass, Olive, Green and Fawn
- **HeatBlock™** cooling technology
- Creates a soft touch medium-high weight landscaping solution
- Ideal for Residential, Playscape, Pets and Commercial
- 3.71m wide roll | 8-year warranty
- *Made in Australia from at least 80% Australian ingredients*

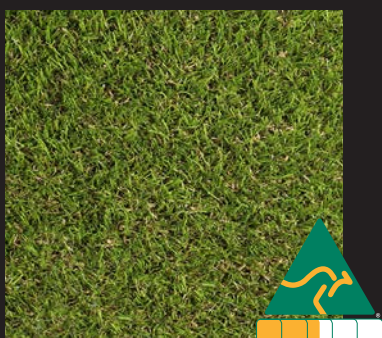
CLASSIC 35

1301 SYN-LAWN
12.7 | 16 | 1160 | 15



FOOT TRAFFIC ★★★★★

SOFTNESS ★★★★★



KEY BENEFITS:

- Combines multi-coloured 25mm grass blades with polypropylene thatch zone of natural colours
- Grass, Nepeta, Green and Beige
- Creates a comfortable light weight landscaping solution
- Ideal for Residential and Light Use Commercial
- 3.71m wide roll | 8-year warranty
- *Made in Australia from at least 50% Australian ingredients*

FRESH CUT 25

1200 SYN-LAWN
7.94 | 14 | 980 | 11



FOOT TRAFFIC ★★★★★

SOFTNESS ★★★★★



KEY BENEFITS:

- Combines multi-coloured 35mm grass blades with polypropylene thatch zone of natural colours
- Grass, Olive, Green and Beige
- Creates a comfortable touch heavy-duty commercial solution
- Ideal for Residential, Playscape, Pets and Commercial
- 3.71m wide roll | 15-year warranty
- *Made in Australia from at least 80% Australian ingredients*

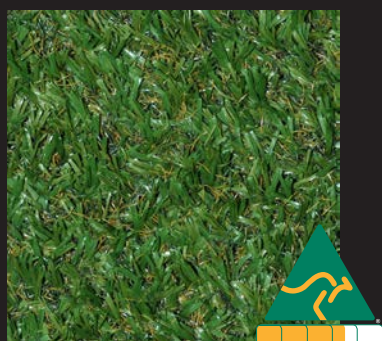
UNIVERSAL 35

2301 SYN-SCAPES
9.52 | 14 | 1670 | 15



FOOT TRAFFIC ★★★★★

SOFTNESS ★★★★★



KEY BENEFITS:

- Combines dual-coloured 35mm wide grass blades with polypropylene thatch zone of natural colours
- Grass, Olive, Green and Gold
- Creates a comfortable touch high weight commercial solution
- Ideal for Residential, Playscape, Pets and Commercial
- 3.71m wide roll | 10-year warranty
- *Made in Australia from at least 75% Australian ingredients*

SUPREME 35

2300 SYN-SCAPES
7.94 | 12 | 1090 | 15



FOOT TRAFFIC ★★★★★

SOFTNESS ★★★★★



KEY BENEFITS:

- Combines darker multi-coloured 40mm grass blades with polypropylene thatch zone
- Grass, Olive, Green and Fawn
- **HeatBlock™** cooling technology and Petfill options
- Creates a comfortable touch and hard-wearing landscaping solution
- Ideal for Pets, Residential and Commercial
- 3.71m wide roll | 8-year warranty
- *Made in Australia from at least 75% Australian ingredients*

PET PREMIUM 40

3400 SYN-PET
12.7 | 15 | 1150 | 11+7



FOOT TRAFFIC ★★★★★

SOFTNESS ★★★★★



KEY BENEFITS:

- 23mm texturised grass blades with heavy duty hybrid emulsion backing
- **HeatBlock™** cooling technology
- Designed to cater for multiple line-markings on Playscape areas
- Non-directional fibres are excellent for gym flooring
- Available in a range of colours; Green, Gravel, Blue, Yellow* and Red*
- Ideal for general purpose education areas and gymnasiums
- 3.71m or 1.83m* wide roll | 8-year warranty
- *Made in Australia from at least 90% Australian ingredients*

AGILITY 23

4201 SYN-PLAY
9.52 | 30 | 1000 | 15



FOOT TRAFFIC ★★★★★

SOFTNESS ★★★★★



KEY BENEFITS:

- 20mm grass blades with heavy duty hybrid emulsion backing
- Designed to cater for multiple line-markings on sporting courts
- Excellent bounce/ball rebound qualities
- Available in a range of colours; Green, Olive, Rust, Blue, Yellow* and Red*
- Ideal for tennis and multi-sport courts / playgrounds
- 3.71m or 1.83m* wide roll | 8-year warranty
- *Made in Australia from at least 90% Australian ingredients*

BOUNCE 20

4200 SYN-PLAY
7.94 | 19.5 | 1000 | 25



FOOT TRAFFIC ★★★★★

SOFTNESS ★★★★★



KEY BENEFITS:

- 9mm grass blades with heavy duty hybrid emulsion backing
- Designed for 'full stick' application over concrete wicket
- Ideal for training wickets and commercial / professional
- 3.66m, 2.80m or 1.83m wide roll | 5-year warranty
- *Made in Australia from at least 80% Australian ingredients*

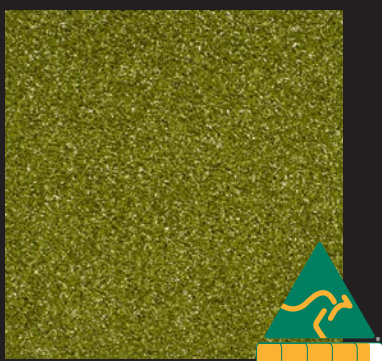
AUSCRICKET 09

4000 SYN-PLAY
4.76 | 30 | 1010 | 0



FOOT TRAFFIC ★★★★★

SOFTNESS ★★★★★



KEY BENEFITS:

- 20mm texturised grass blades with non-directional characteristics
- **HeatBlock™** cooling technology
- Provides a soft and realistic putting surface
- Designed for both easy DIY home concrete cover putting areas, as well as professionally installed golf greens
- 3.71m wide roll | 8-year warranty
- *Made in Australia from at least 90% Australian ingredients*

ICONIC 20

5200 SYN-GOLF
4.76 | 21 | 1270 | 15



FOOT TRAFFIC ★★★★★

SOFTNESS ★★★★★

Maintaining Your Artificial Grass

Artificial grass needs to be maintained on a regular basis to look and perform at an optimum level. There is a perception that artificial grass is maintenance free, but the reality is they require less maintenance than natural grass.

A crucial tip for maintaining your artificial grass is to do a little, often, rather than neglecting the lawn for a few months and being faced with a major maintenance program to restore your artificial grass to its optimum condition.



SETTLEMENT It will take 2-3 months for your new artificial grass to settle and reach its optimum condition. During this period the infill materials penetrate the fibre pile and settle into the turf structure. Light grooming using a medium soft bristle brush on a regular basis will

help the pile remain upright, aid infill settlement and promote the life of the installation.

BRUSHING The main reason for brushing is to stimulate the top fibres of your artificial grass, aiding them to remain vertical. We recommend light brushing at least once every month and actioned in a number of alternate directions.

Some infill may appear on the top of your artificial grass from time to time, but this only requires light brushing to restore it to the turf structure.



DEBRIS Debris should be removed from your artificial grass on a regular basis to prevent organic matter building up in the turf structure. We recommend debris removal at least once every week and can be actioned with a leaf rake and shovel, leaf collecting device such as Aussie

Clean Sweep or a mechanical blower. Debris build-up may affect the drainage capabilities of your artificial grass system and encourage weed growth.



ANIMAL FAECES Animal faeces should be removed manually from your artificial grass as soon as you find it and the area washed down with a warm soapy solution such as household washing up liquid. The faeces will not damage your artificial grass but will work its way into the artificial grass structure. The longer it is left the harder it will be to clean out.



STAIN REMOVAL Most stains can be removed from your artificial grass with warm soapy water, household grade detergent such as washing up liquid, and "elbow grease"!

Heavy oil marks are removed using mineral spirits and a cloth; remembering to wash down the cleaned area with water to dilute the spirit residue.



BURNS For superficial burns in your artificial grass, carefully clip the pile with scissors just below the blackened or melted tips. For large deep burns you may need to replace that section of artificial grass therefore we recommend that you contact your local installer for professional care.

TREATMENT If you follow the foregoing recommendation for debris removal you will dramatically reduce the chances of moss / algae and weeds forming on or in your artificial grass. We recommend moss / weed killing should take place once a year with water-based systemac weed killer:

- **Weeds:** Round Up/Zero: is a herbicide of the triazine class. The compound is used to control broad leaf weeds and annual grasses. Applied in wand form directly to the leaf, not sprayed.

- **Moss/Algae:** Wet and Forget: It has a unique combination of biodegradable selective surfactants for moss removal, mould removal and gunge removal on any exterior surface.

Please remember to remove all dead matter including roots and sweep debris out of the turf structure.



VEHICLES Only light vehicles under 1-ton, fitted with wide, low-pressure tyres (8 to 10psi) should be allowed on your artificial grass.

TAKE CARE You should avoid using / taking the following items onto your artificial grass:



Glass, tin or ceramics: broken sharp objects can bury themselves into the turf structure and potentially cause injury or damage your artificial grass.



Cigarettes or hot works: although your artificial grass has a fire safety rating, open flames and hot items may melt the fibre pile.



Chewing gum: again this can be removed by freezing the gum and chipping it off the surface, but it is strongly recommended to avoid this situation.

DISTRIBUTED BY: